

Paraiso

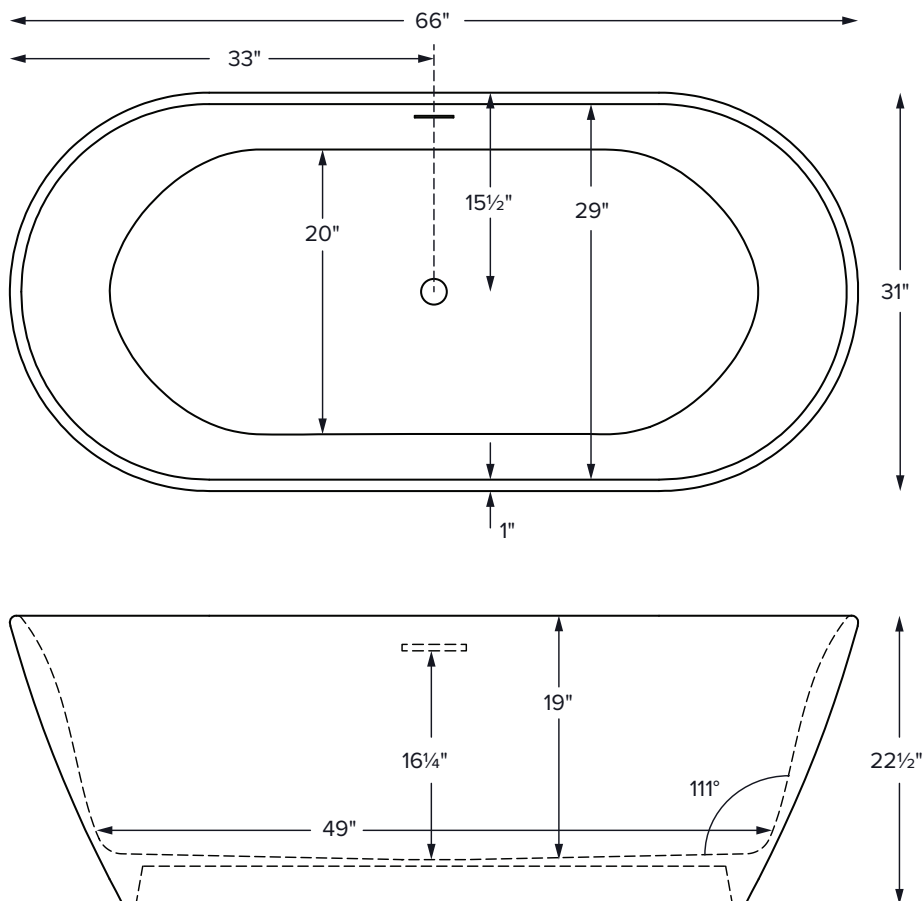
66" x 31" x 22½"

GENERAL SPECIFICATIONS:

Material Mineral Composite

Soaker Weight 275 lbs / 125 kg

Maximum Fill 87 gal to overflow
NOTE: Filling this tub to the maximum may require an above average size or dedicated water heater.



ELECTRICAL SPECIFICATIONS

Required Electrical Service - 110 Volt



Air Bath - Heated Blower - 1-15 amp GFCI

CSA Certified C/US; ANSI Z124.1

CSA Certified C/US; ANSI 112.19.7

IMPORTANT INFORMATION

- Includes an integrated slotted overflow, which only requires drain installation.
- Before ordering or installing, please consider future access to equipment.
- Air baths require job site preparations for remote mounting the blower and required check valve. Check valve must be installed higher than the rim of the tub. The keypad is shipped loose and may be mounted on a nearby wall or decking. A waterproof remote control is also included. Please read installation manual prior to ordering.
- Specifications and configurations are subject to change without notice.
- Measurements are $\pm 1/2"$ and are subject to change without notice.
- Measurements herein supersede all others published prior to publication date shown below

Hydrotherapy Packages	Package Contents	Part #	MSRP
 Soaker	Soaking bath - no jets; includes an integrated slotted overflow, in white with a toe-tap drain kit.	PLUS550	\$5,130
 Air Massage	20 air jets, heated air blower, keypad, waterproof remote control, integrated slotted overflow, in white with a toe-tap drain kit. Blower and control boxes must be remote located.	PLUAST550	\$8,430

Lead Time - 10 business days

Color and Finish Options	Standard Options and Accessories
NOTE: pricing is MSRP and part codes for all options listed in parenthesis.	NOTE: pricing is MSRP and part codes for all options listed in parenthesis.
Standard Colors: White, gloss finish only	Quick Ship - Reduces lead time - please call for availability (QSPRI2) \$755
Optional Hardware	Bathroom Table - Constructed of SculptureStone® (TABLE) \$965 available in white only Gloss Finish Upcharge (SSGLOSSSNK) \$215
Quick Drain Kit - (WOQ) \$250	SculptureStone® Tub Tray - Available in white only Solid without stemware holder (SSTRAY1) \$440 Solid with Stemware Holder (SSTRAY2) \$440
Integrated Overflow and Toe-Tap Drain Kit Finishes PVC drain - White (included with tub) Chrome upgrade (MCIOC) no charge Brushed Nickel upgrade (MCIOBN) no charge Polished Nickel upgrade (MCIOPN) no charge	Teak Tub Tray Slatted (TK-TRAY1) \$415 Solid (TK-TRAY2) \$415
Floor-Mounted High-Flow Tub Filler - Two designs available Contemporary Chrome (FILLC) \$2,055 Brushed Nickel (FILLBN) \$2,220 Traditional - Chrome (FILLTC) \$2,055 Brushed Nickel (FILLTBN) \$2,220	Teak Bath Mat - Measures 30" x 17.5" x 1" (TKMAT3018) \$430 Custom sizes also available, contact MTI for details.
Faucet Stands - Available in two styles & multiple sizes Standard Faucet Stand , Matte Finish Small / 21.75" x 14.25" / 3-hole capacity - (STAND) \$945 Large / 21.75" x 22" / 5-hole capacity - (STANDL) \$1,060 Gloss Finish Upcharge (SSGLOSSSNK) \$215 Premium Faucet Stand 39" h x 15" w - Matte - (SSFSR3915MT) \$1,770 Gloss - (SSFSR3915GL) \$2,085 39" h x 10" w - Matte - (SSFSR3910MT) \$1,770 Gloss - (SSFSR3910GL) \$2,085 23" h x 20" w - Matte - (SSFSR2320MT) \$1,505 Gloss - (SSFSR2320GL) \$1,820 23" h x 15" w - Matte - (SSFSR2315MT) \$1,505 Gloss - (SSFSR2315GL) \$1,820	For complete options information and specifications, visit mtibaths.com .



Inside view of tub